



НАЦИОНАЛЬНЫЙ ИНСТИТУТ
СТРАТЕГИЧЕСКИХ ИССЛЕДОВАНИЙ
КЫРГЫЗСКОЙ РЕСПУБЛИКИ



Collection and analysis of electoral data in Kyrgyzstan

Elnura Omurkulova-Ozierska
National Institute for Strategic Studies
Kyrgyz Republic

Contents

- Elections results
- Prehistory of the project
- The main risks to the elections
- Scheme of the election risks monitoring with ERMTool
- Main recommendations to the Government

Kyrgyz Republic

- 6 mln people
- Parliamentary Republic
- Two revolutions: 2005 and 2010, 2015?
- 4th of October, 2015 - Parliamentary elections



Election results

- 2374 polling stations;
- 613 international observers from 69 countries and 40 international organizations;
- 2 761 297 voters, 1 630 125 voters participated in the elections - 59, 03 %;
- 6 political parties.

Prehistory of the project

- UNDP report on Risk assessment of parliamentary elections in Kyrgyzstan (May, 2015)
- Announcement on field monitors from the regions (May, 2015)
- Training for NISS research officers on the use of ERMTTool in Bishkek, Kyrgyzstan (June, 2015)
- Training of field monitors (10-11 August, 2015)
- 13th of August - the start of the project

Legal risks

Changes in Election Law 5 months before elections:

- The electoral deposit has been raised from 500 000 soms (7 000 \$) to 5 000 000 soms (70 000\$);
- Operator and technical equipment;
- No voter marking;
- ID card or passport (excluded the officer's ID, pensioner's ID, driver license);
- Voting outside (3rd of October, 2015)
- and other changes...



that led to weak information campaign, technical equipment, critique, rumours, distrust and negative attitude of the population to entire election process

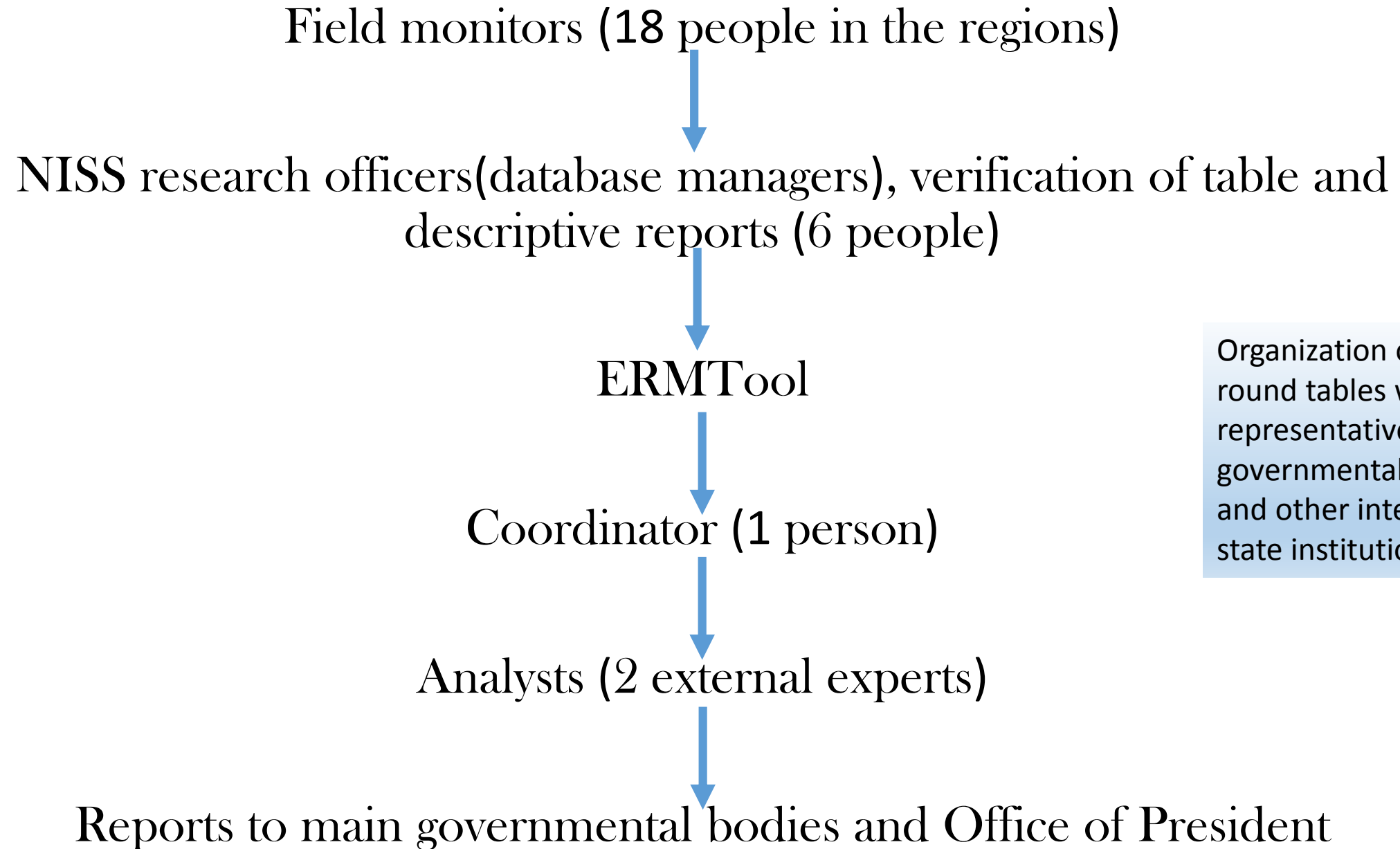
The main risk for destabilization in the country

- Non-recognition of the election results

The grounds for the *non-recognition*:

- Incompleteness of the voters' register;
- Imperfection of biometrics;
- Vote counting;
- Announcement of election results.

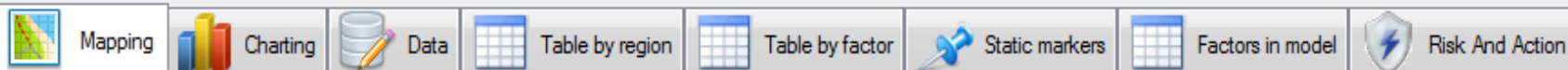
Monitoring Scheme



Organization of closed round tables with the representatives of the governmental ministries and other interested state institutions

10 risk factors for Kyrgyzstan

1. *Biometric as a tool for voter registration*
2. *Media*
3. *Provocative and violent activities*
4. *Problematic vote counting (after election day)*
5. *Attitude to elections*
6. *Financial sources of political parties*
7. *Attitude to electoral system*
8. *Problems in tally of votes (after election day)*
9. *Dependency of polling stations' members*
10. *Riots and manifestations of political parties*



Map settings

Date From:

Monday , August 17, 2015

Date To:

Tuesday , November 03, 2015

All available dates

Select the factors to be drawn

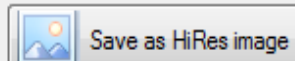
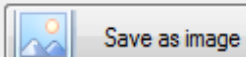
выборы

9. Зависимость избирательных комиссий

10. Митинги и пикеты партий

Select regions to be drawn

- Узгенский р.
- Чон-Алайский р.
- Талаская об.
- Бакай-Атинский р.
- Кара-Кульджинский р.



Questionnaire (1.1): Contested electoral law

Date _____ (DD/MM/YYYY)

Geographical unit _____ (region, e.g. province or local community)

Source _____ (individual/institution)

Surveyor _____ (e.g. name/code)

Assess the extent of truth of below statements with respect to your region^[1]:

	Very Low	Low	Medium	High	Very high	Not applicable
Electoral law is not harmonized with the Constitution.	1	2	3	4	5	NA
Electoral law is publicly contested by the relevant actors (e.g. political parties, citizens, international actors).	1	2	3	4	5	NA
Electoral law is contested in the court.	1	2	3	4	5	NA
Electoral law discriminates particular groups, including women.	1	2	3	4	5	NA

^[1] Surveyor will clarify regional focus with the respondent prior to obtaining answers.

Оцените насколько верно утверждение в баллах от 1 до 5 (где 1 – абсолютно неверно, 5 – абсолютно верно)

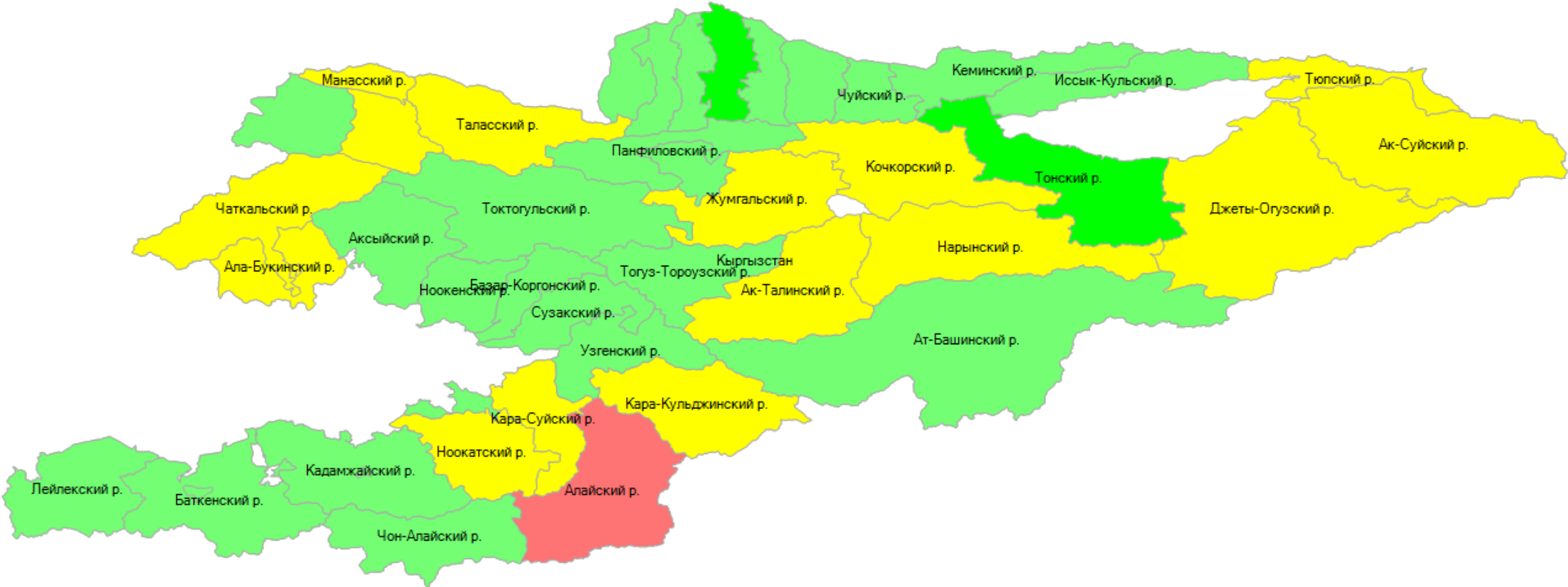
Опросник 1.

1. На избирательных участках не хватает сотрудников
2. На избирательных участках не хватает материалов и оборудования, или они в неисправном состоянии.
3. Члены участковых избирательных комиссий не понимают или нарушают процедуры идентификации избирателей.
4. Процесс идентификации избирателей сопровождается большим количеством жалоб.
5. Доверие избирателей к АСУ (автоматическая урна)

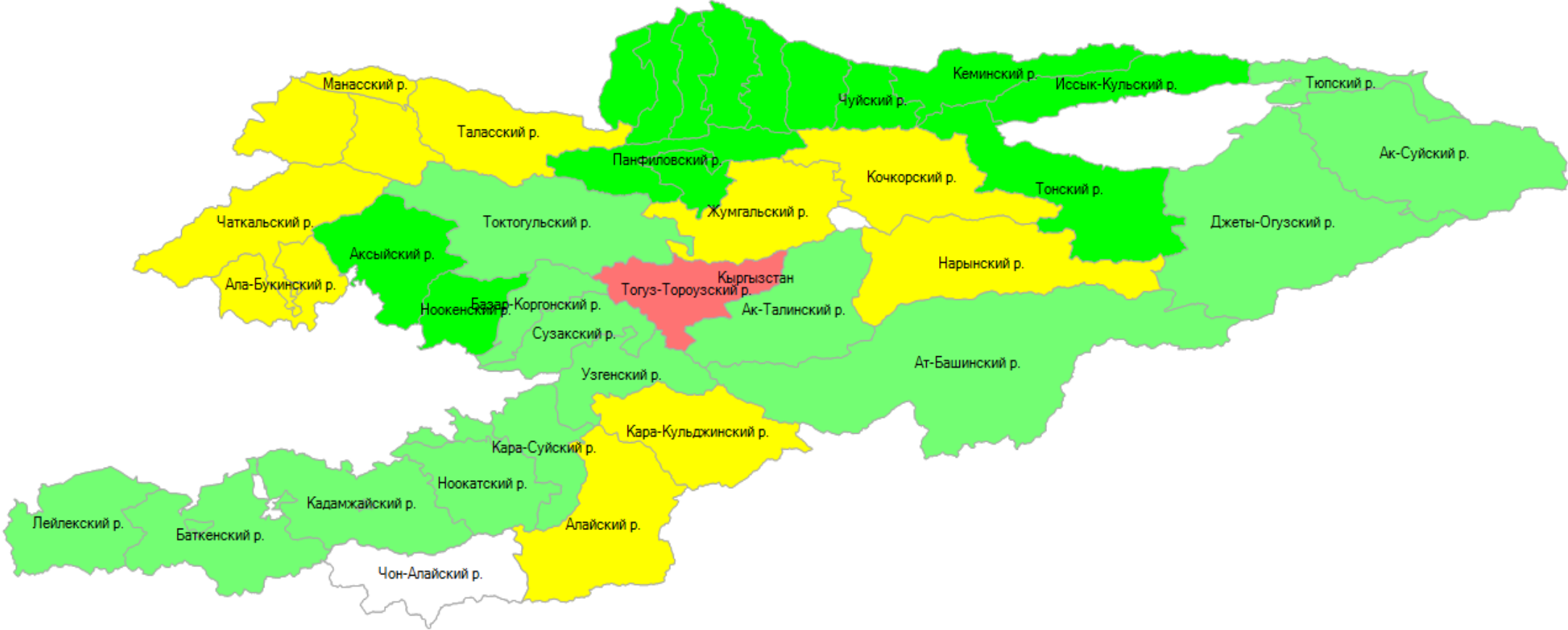
Опросник 2

6. СМИ дискредитирует конкретных кандидатов и партии, этнические и другие меньшинства.
7. Политические партии используют средства массовой информации для провокационной кампании
8. Репортажи СМИ безответственны и ориентированы на сенсацию
9. СМИ выступает за определенных кандидатов и партии в своих статьях и ТВ/Радио программах.

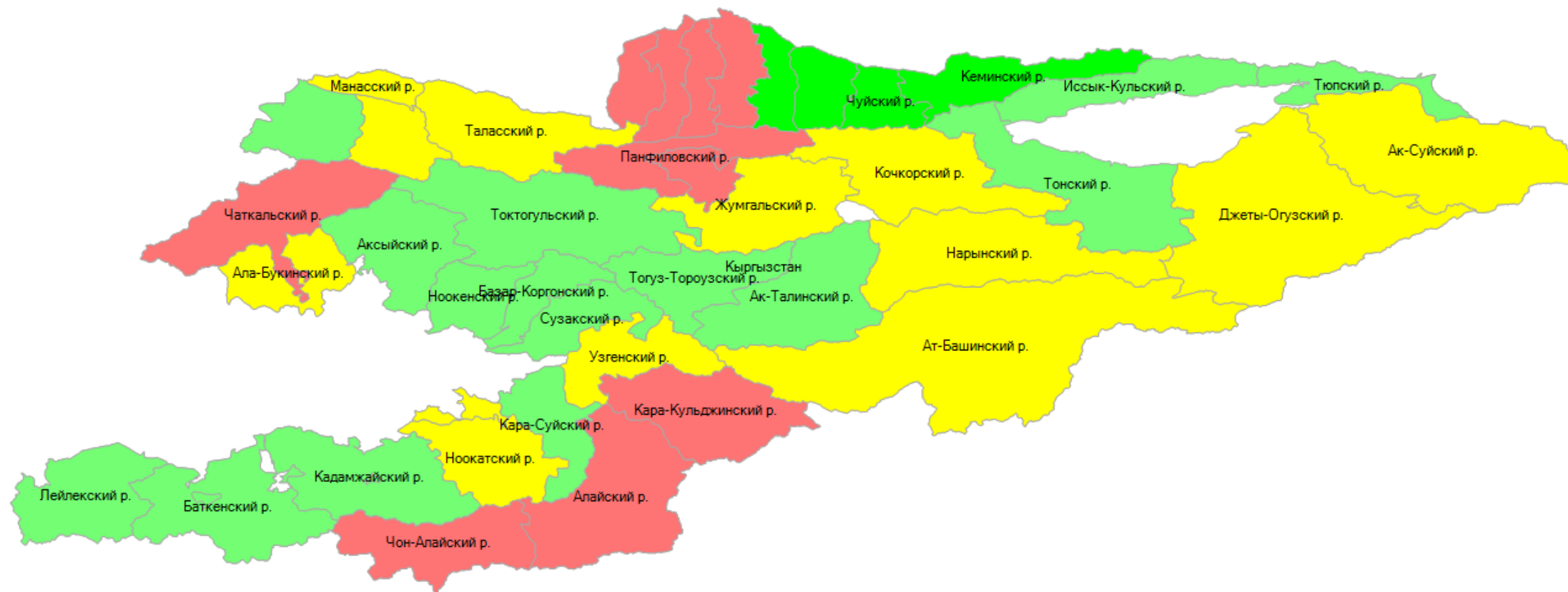
Biometrics 17.09.2015



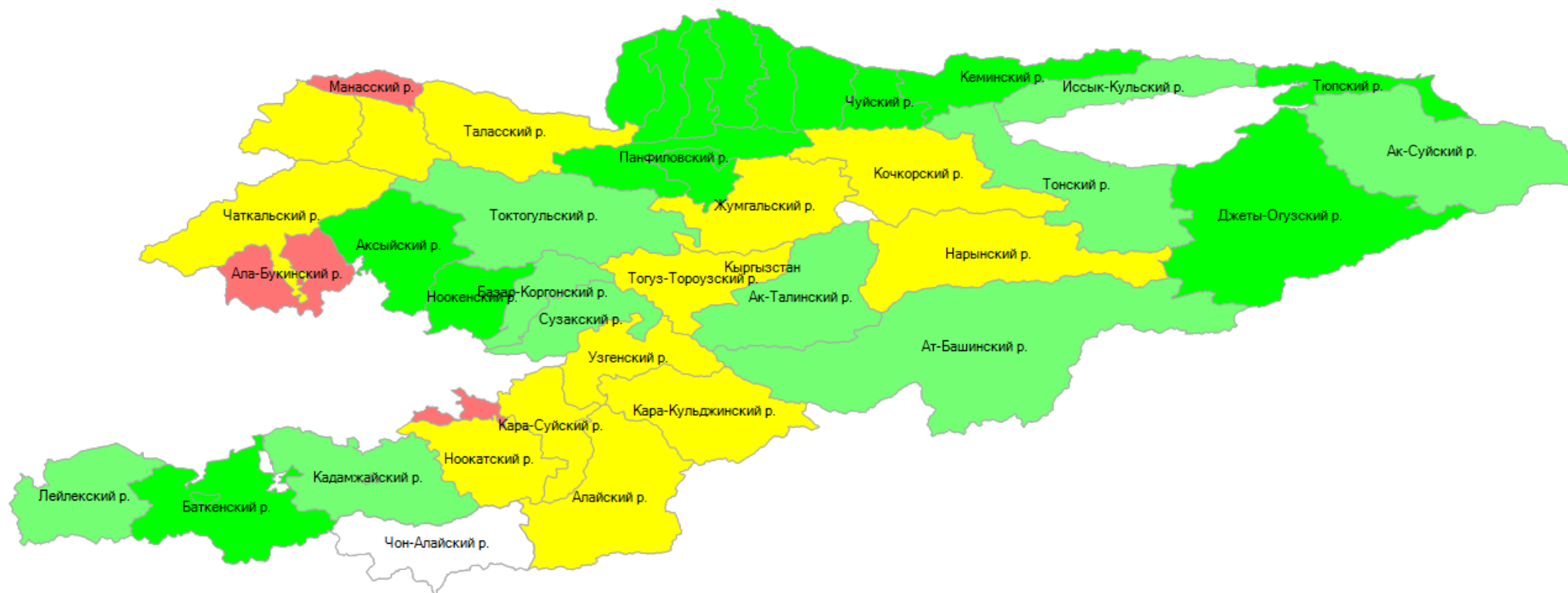
Biometrics 01.11.2015



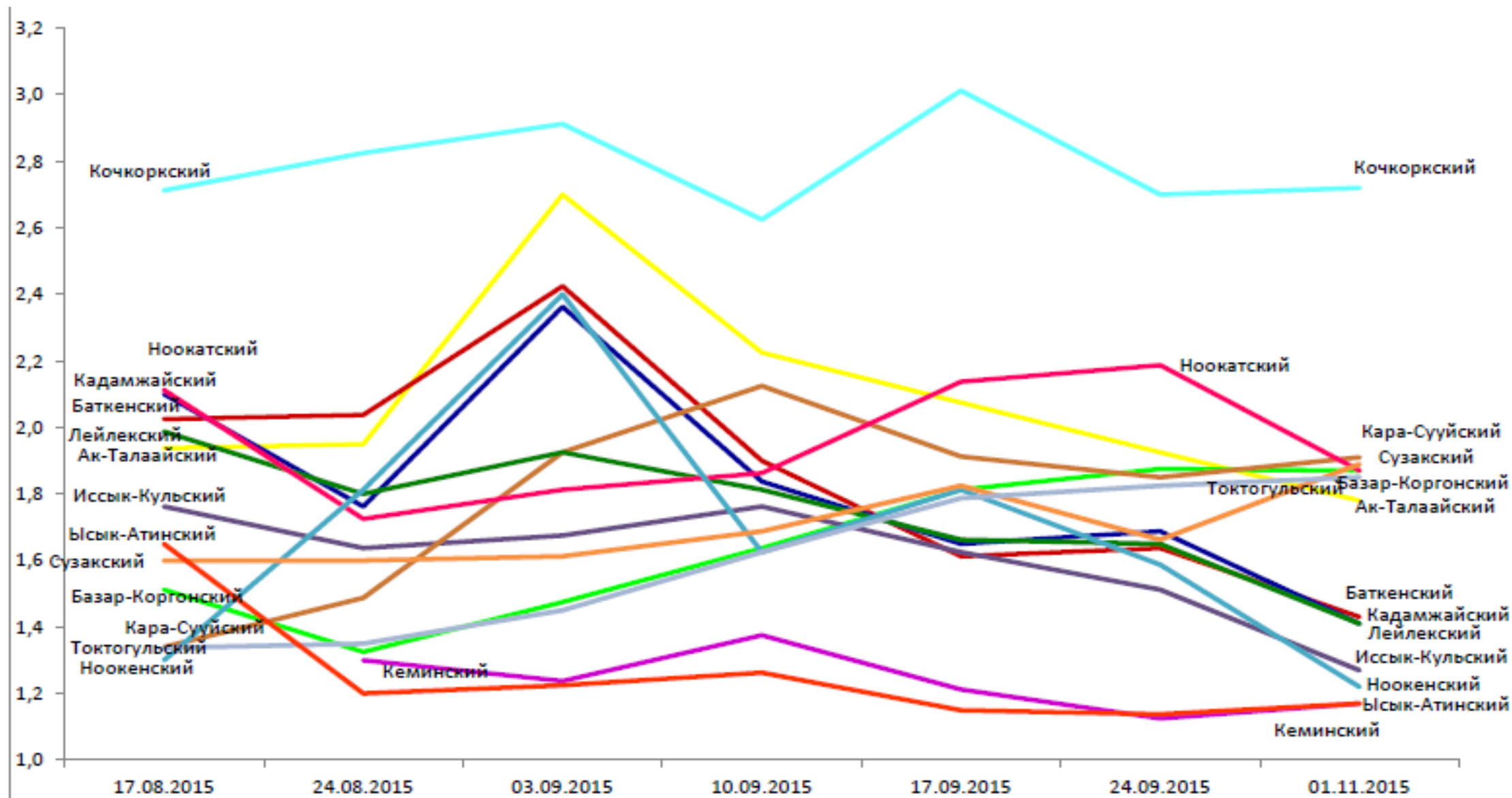
Attitude to the elections 17.09.2015



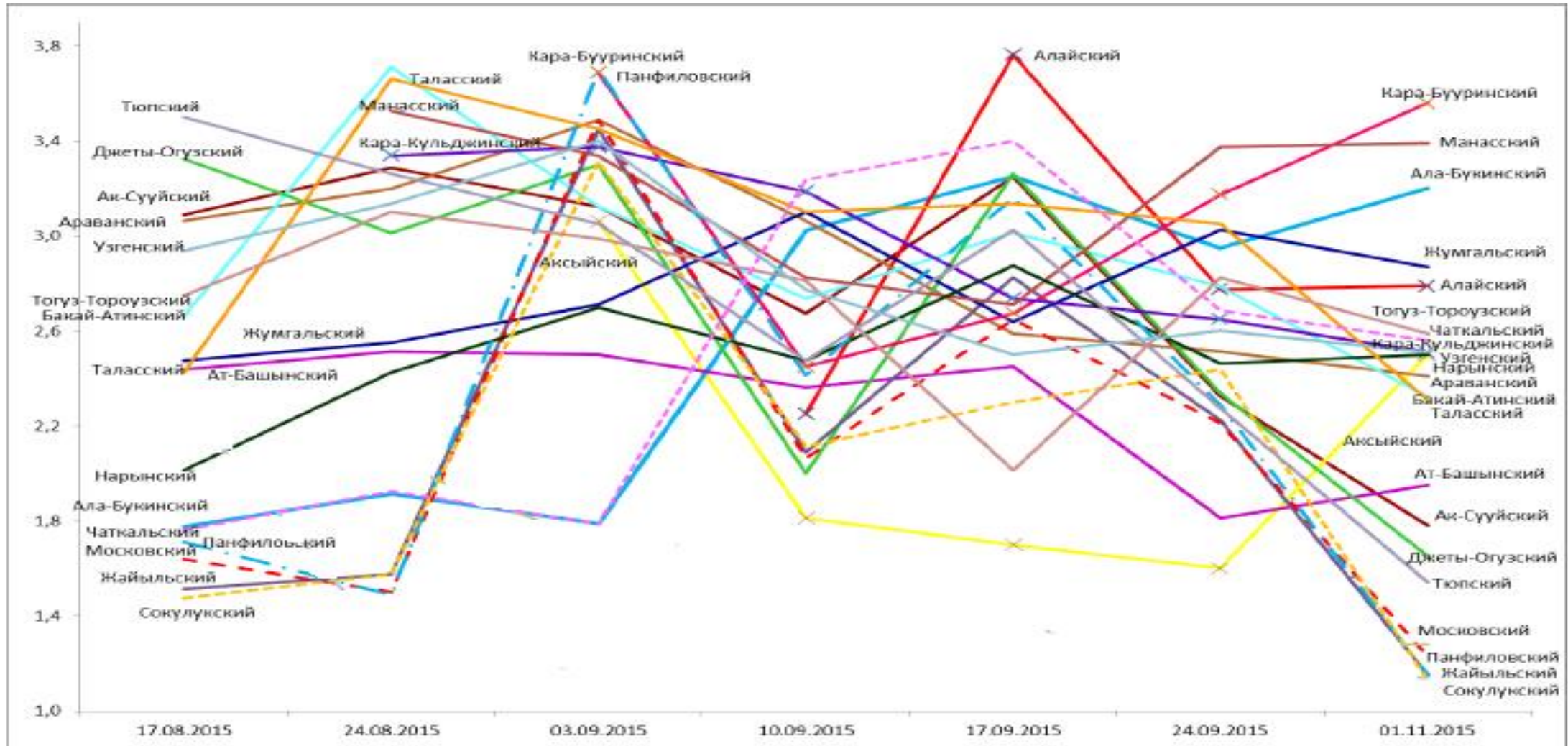
Attitude to the elections 01.11.2015



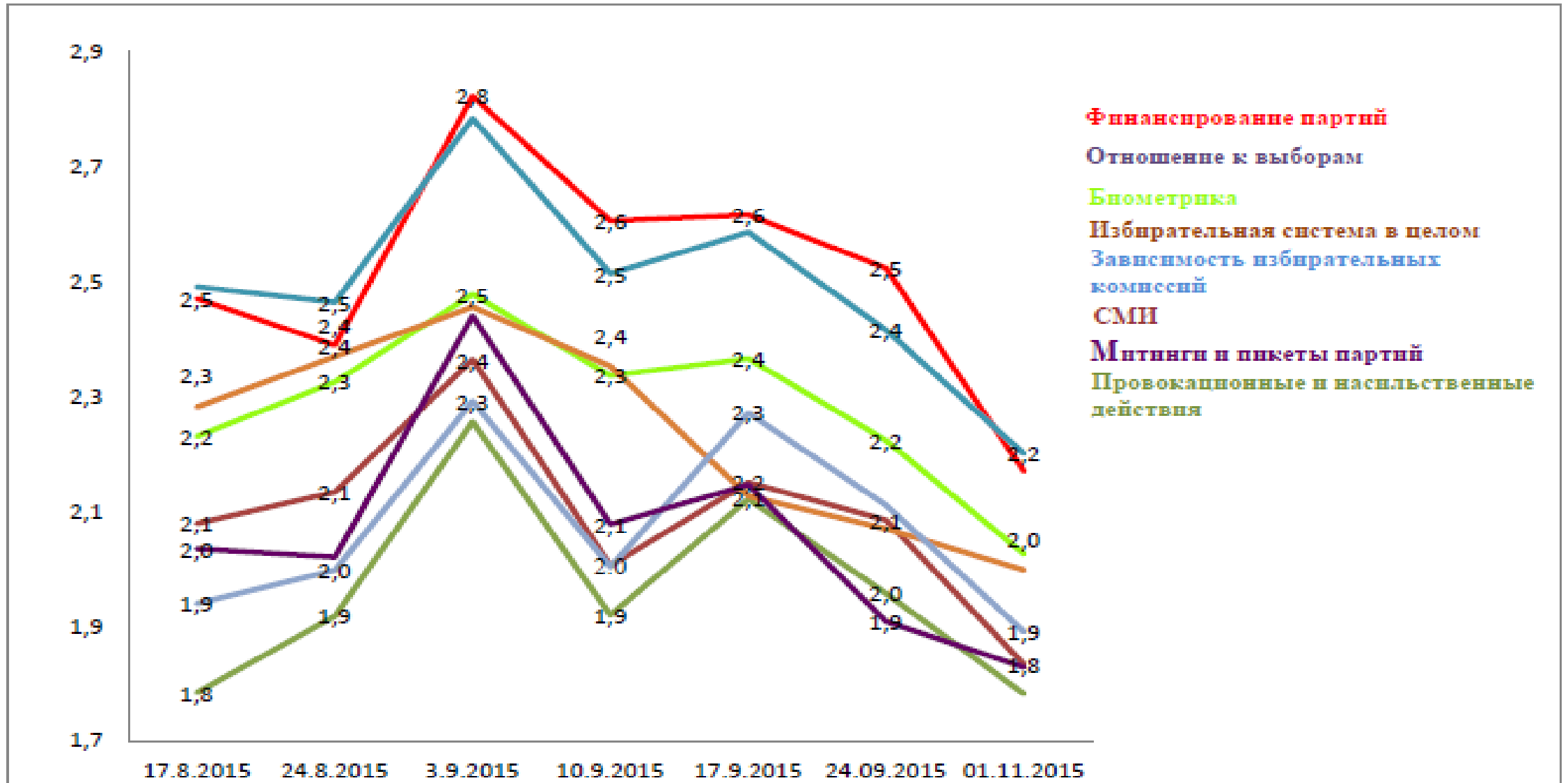
“Peaceful” districts



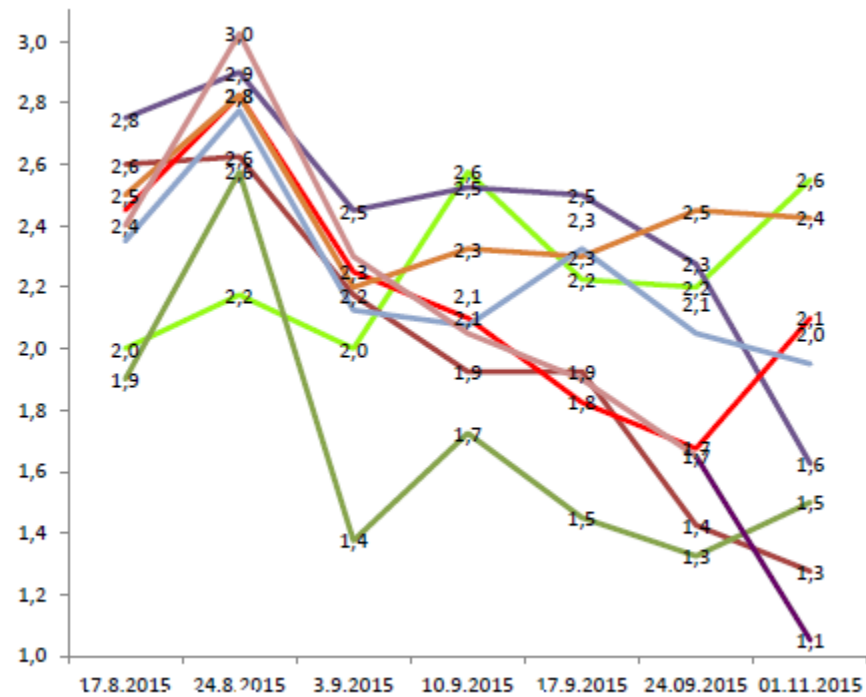
“Nonpeaceful” districts



Risk factors dynamics



Risk factors dynamics: Bishkek and Osh



- Биометрика
- Избирательная система в целом
- Финансирование партий
- Зависимость избирательных ком
- Отношение к выборам
- Провокационные и насильственные действия
- СМИ
- Митинги и пикеты партий



- Финансирование партий
- СМИ
- Отношение к выборам
- Избирательная система в целом
- Провокационные и насильственные действия
- Зависимость избирательных ком
- Биометрика
- Митинги и пикеты партий

Recommendations to the Government:

- Addressed recommendations to all ministries working on electoral process;
- Initiation of the public discussion on Bribery of voters;
- Wider information campaign;
- Guidance for political parties;
- Videos for population on the electoral process;
- Regular Trainings for polling stations members;
- Accountability of political parties accounts;
- Financial motivation of the polling stations members from the deposit.

Thank you for attention!

Elnura Omurkulova-Ozierska

Research Officer

National Institute for Strategic Studies of the Kyrgyz Republic

E-mail: elya.omurkulova@gmail.com

Web-site: www.niss.kg